

# KEY PLAN

NOTES:  
1. FOR SPECIAL NOTES AND LEGEND, REFER TO DRAWING NO. 2005/C1/2004.

DATE	DESCRIPTION	BY	CHKD
15/05/04	ISSUED FOR TENDER SUBMISSION	JL	MS
17/05/04	REVISED FOR CONSTRUCTION	JL	MS
18/05/04	REVISED FOR CONSTRUCTION	JL	MS

The Government of the Hong Kong Special Administrative Region  
Drainage Services Department

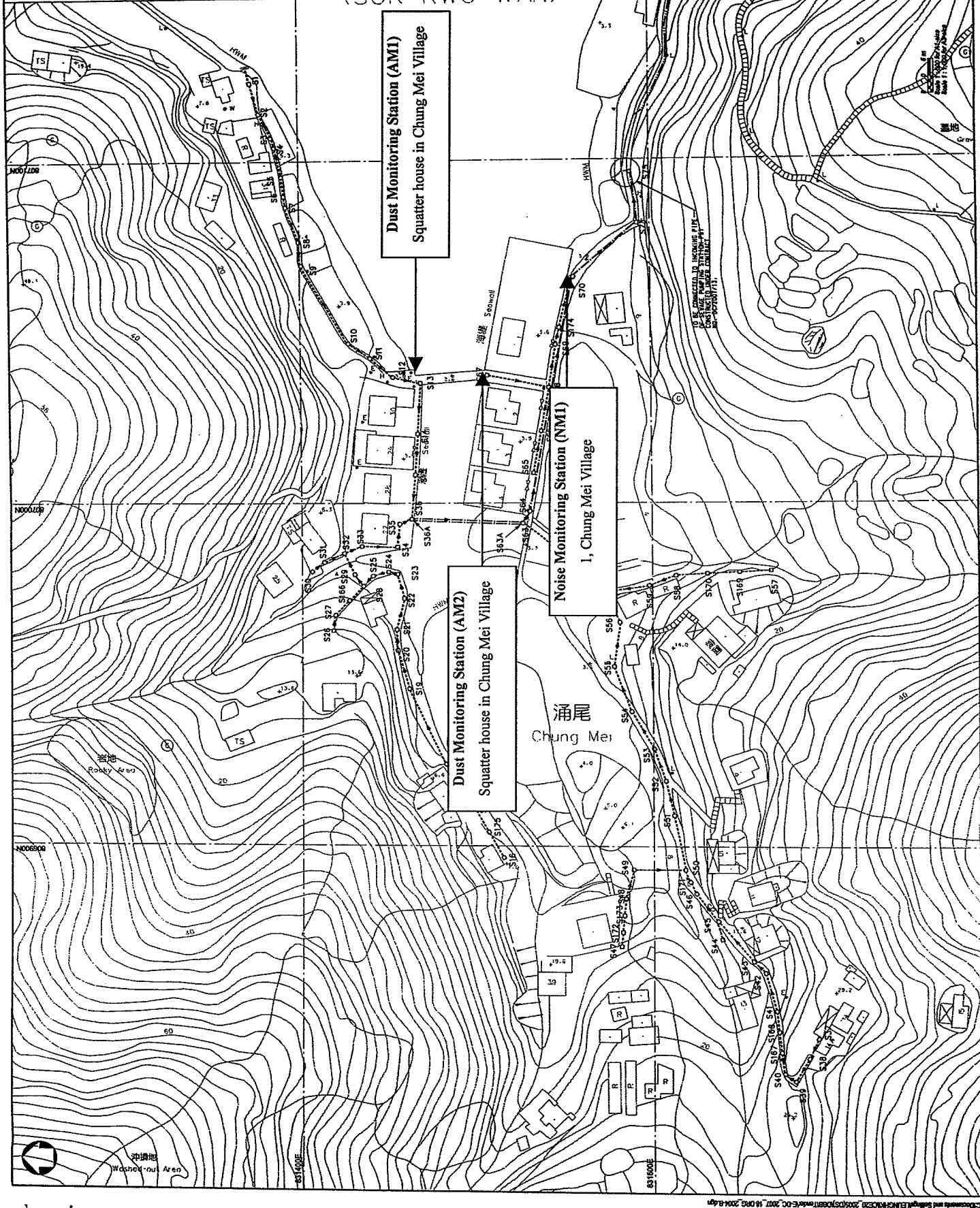
CONTRACT NO. DC/2007/18  
YUNG SHIE WAN AND SOK KWU WAN  
VILLAGE SEWERAGE, STAGE 1 WORKS

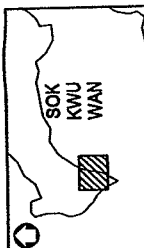
VILLAGE SEWERAGE LAYOUT  
PLANS - SOK KWU WAN  
(SHEET 1 OF 3)

PROJECT NO.	2005/C1/2004
DATE	15/05/04
SCALE	AS SHOWN
PROJECT	DC/2007/18
DATE	18/05/04



© 2004 Scott Wilson  
SCOTT WILSON CONSULTANTS





**KEY PLAN**

NOTES:  
1. FOR GENERAL NOTES AND LEGEND, REFER TO DRAWING NO. 2005/C1/2001.

B. VENDOR ISSUE FOR CONSTRUCTION		J. I.R.
A. SECTOR TENDER SUBMISSION		J. I.R.
DATE	NO.	DATE
2005	18	2005
2005	18	2005

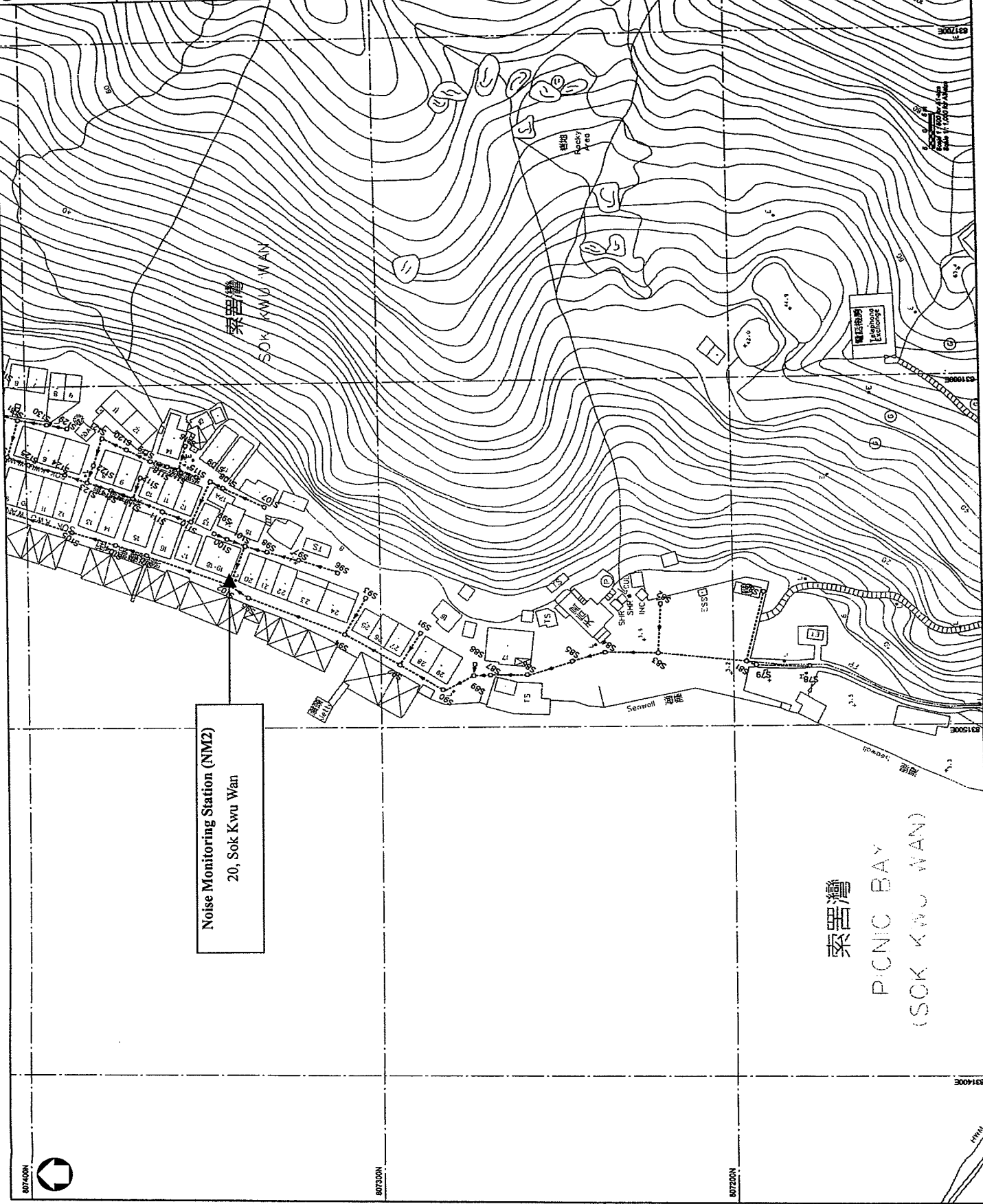
The Government of the Hong Kong Special Administrative Region  
Drainage Services Department

CONTRACT NO. DC/2001/18  
YUNG SHUE WAN AND SOK KWU WAN  
VILLAGE SEWERAGE - STAGE 1 WORKS

VILLAGE SEWERAGE LAYOUT  
PLANS - SOK KWU WAN  
(SHEET 2 OF 3)

2005/C1/2005	
DATE	NO.
2005	18
2005	18

Scott Wilson  
CDM  
SCOTT WILSON CDM JOINT VENTURE



Noise Monitoring Station (NM2)  
20, Sok Kwu Wan

索罟灣  
PICNIC BAY  
(SOK KWU WAN)

